

1102 H STREET NE

H Street Corridor
WASHINGTON, DC

streetsense.

4600 east west highway, suite 800, Bethesda, MD 20814

MARKET SUMMARY

Over the past decade, the H Street Corridor has established itself as one of the key emerging sub-markets in DC. It is home to well-known dining establishments (The Atlas Room, Toki Underground, Granville Moores) and has evolved into a destination entertainment district (Rock & Roll Hotel, H Street Playhouse).

The emergence of H Street is exemplified by a 49% increase in Average Household Incomes since 2000 (currently \$91,976) and over the City's investment of \$65M in aesthetic improvements to streetscape, landscaping, etc. There are currently over 2,200 new residential units under construction or in planning stages.



CONCEPTUAL FACADE &
STOREFRONT RENDERING

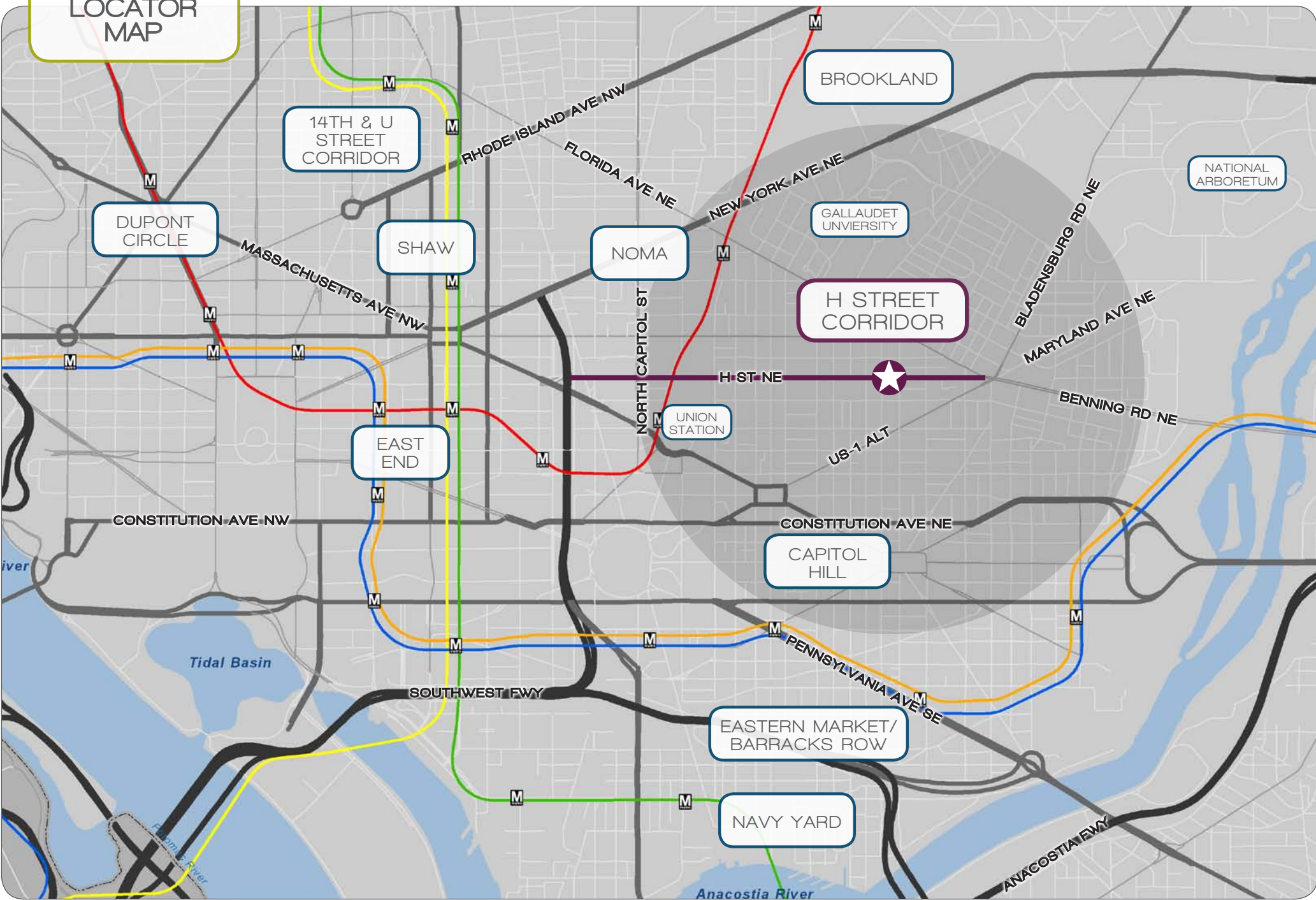
Jared Meier . 240.479.7195
jmeier@streetsense.com

Andrew Poncher . 202.730.9890
aponcher@streetsense.com

Michael Johns . 202.573.8333
mjohns@streetsense.com

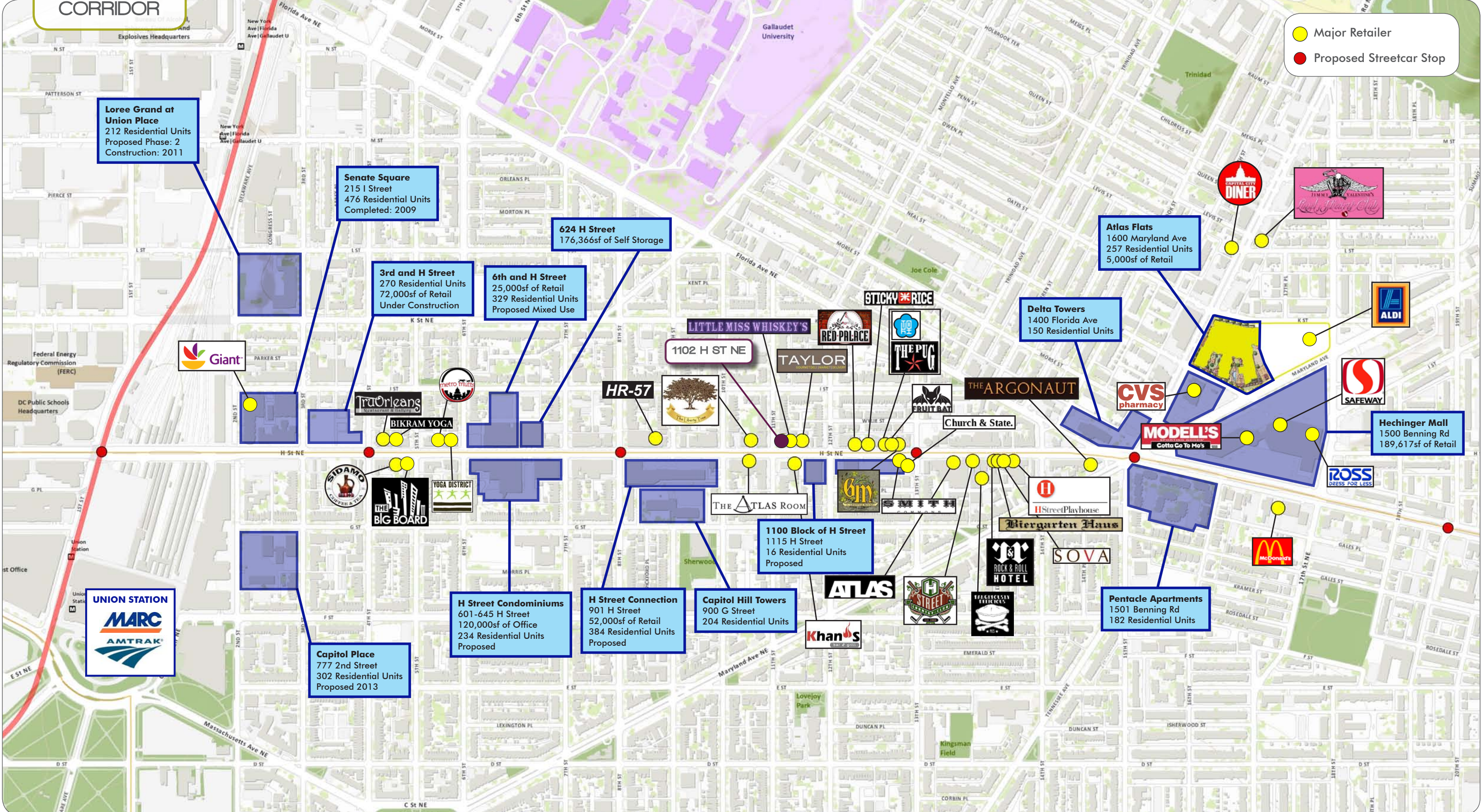
www.streetsense.com

LOCATOR MAP



H ST CORRIDOR

- Major Retailer
- Proposed Streetcar Stop



RETAIL MAP

TO UNION STATION

1102 H ST NE



LITTLE MISS WHISKEY'S

TAYLOR
GOURMET DELI (MARKET) DELIVERY

STICKY RICE



H St NE

- PROPOSED STREETCAR STOP

THE ATLAS ROOM

Khan's
bar & grill



SMITH

Church & State.

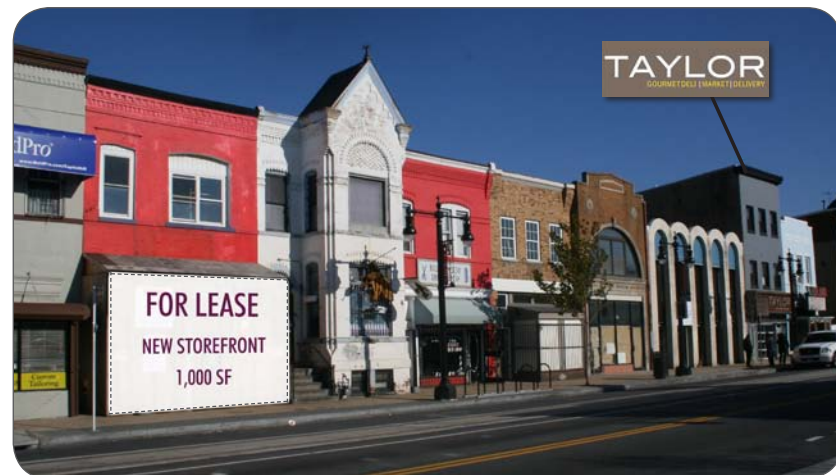
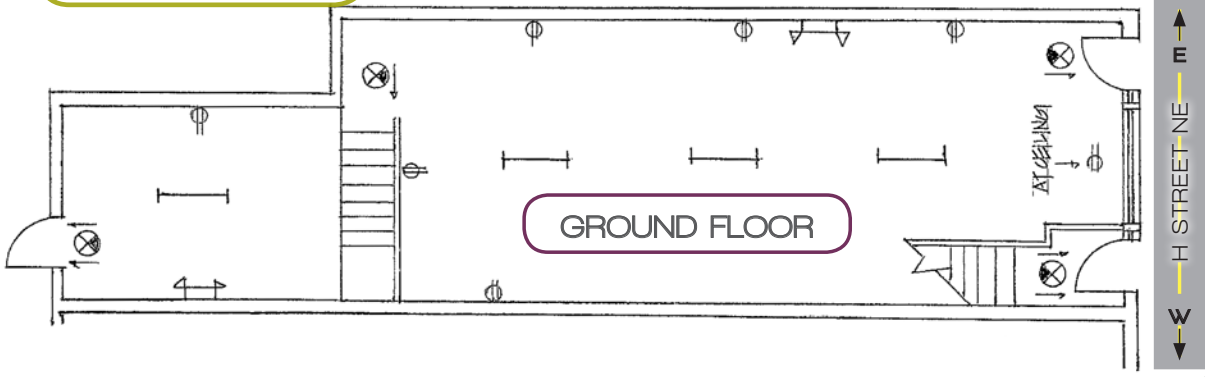
ATLAS



Biergarten Haus

SOVA

SITE PLAN



Jared Meier . 240.479.7195
jmeier@streetsense.com

Andrew Poncher . 202.730.9890
aponcher@streetsense.com

Michael Johns . 202.573.8333
mjohns@streetsense.com

www.streetsense.com